



Electrical & Automation

THERMAL IMAGING

OVERVIEW

Our cutting-edge thermal imaging services are designed to ensure the safety, efficiency, and reliability of your electrical systems. Using advanced infrared technology, we identify potential issues such as overheating components, poor connections, and electrical faults before they escalate into costly repairs or system failures. Whether it's for routine maintenance or diagnosing specific problems, our thermal imaging solutions provide detailed insights that help you maintain peak performance in your operations.

Some of the many benefits of conducting thermal imaging for your site are:

- **Early Fault Detection:** Identify potential issues, such as overheating components and poor electrical connections, before they lead to system failures.
- **Lower Insurance Premiums:** Demonstrating a proactive maintenance programme, including regular thermal imaging, can help reduce insurance premiums by showcasing risk mitigation efforts.



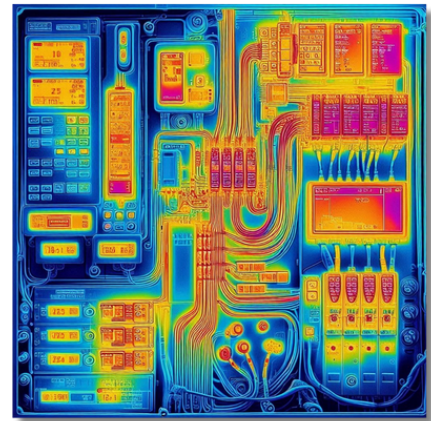


OUR SYSTEM

HIGH RESOLUTION IMAGES

We use the FLIR E8 thermal imaging camera to provide high-resolution thermal scans of critical electrical components, including switchboards, control cabinets, electric motors, and other essential devices.

Our infrared technology quickly identifies hot spots—potential fire hazards that could lead to costly downtime, damage, or safety risks.



ADVANCED ANALYSIS

Area/Location	DB2 (factory)
Equipment ID/Board ID	DB2 top
10/4/2024 6:03:35 PM	
	PRIORITY 4
Fault Temperature	
Fault Temp (Max)	20.7 °C
Reference Temp (Normal)	19.9 °C
Temperature Difference	0.9 °C
Observations	
Actions and Recommendations	No action required
Camera Parameters	
Camera model	FLIR E8at W18
Lens	FOL7

- Using advanced analytics software, we thoroughly check each thermal photo, checking for hot spots or other electrical issues.
- We note any temperature anomalies detected and include detailed descriptions of findings in report submitted to client.
- We then suggest corrective actions to resolve identified issues.

REGULATORY COMPLIANCE

- Strong understanding of regulations and codes of practice around thermal imaging to ensure that your site is compliant.



GET IN TOUCH

We're here to help.

If you're in need of our services or just have more questions then feel free to reach out to us through phone or email.

We look forward to working with you!

CONTACT US :



1300 29 35 32



www.cwelecautomation.com.au



admin@cwelecautomation.com.au